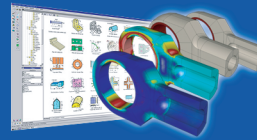


Applied Design Analysis Corporation

Company Profile



Corporate Mission

Applied Design Analysis Corporation (ADA) is an Engineering Software company which seeks "population of simulation" and "automation of design and manufacturing technology" using fully "Advanced Technology" and "Global Network". Specifically, we practice pragmatical analysis consulting services related to application technology of FEM and a unique development of advanced analysis simulation softwares through import, sales, and support of CAE (Computer Aided Engineering).

5 Elements of ADA

- Popularizaion of CAE Simulation
- Automation of design and manufacturing technology
- Advanced Technology
- Global Network
- Personality

With these 5 elements, we contribute to a new "popularization of pragmatical simulation technology". In addition, as the second business, we have an advanced first class architect's office with computer supports. Specifically, we practice structural planning and execution designing of large space constructions and specialty construction facilities as well as visual landscape simulation services which required in construction base planning.

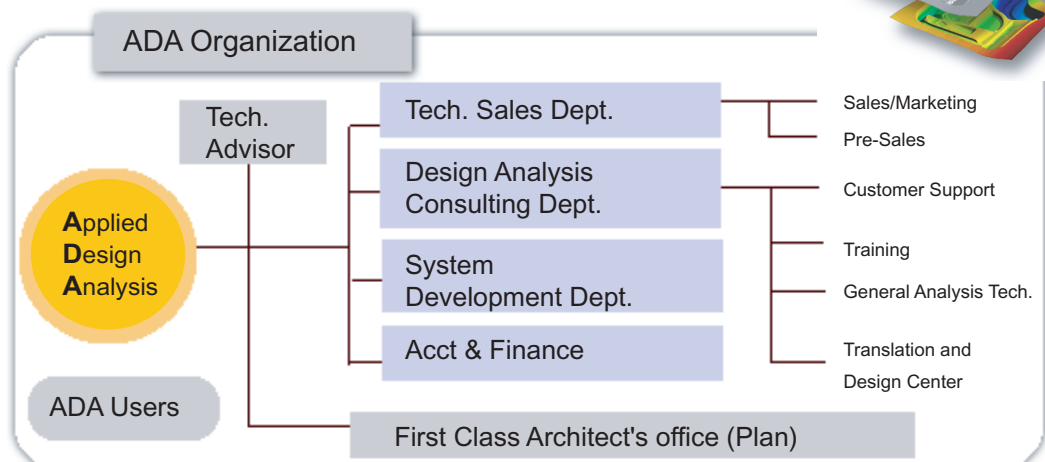
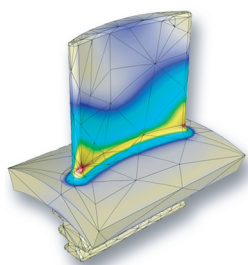
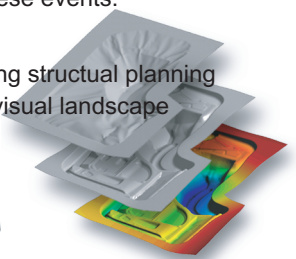
Descriptions of Business

【The First Business】

- Import, sales, maintenance, and technological consulting for advanced CAE system related in designing mechanical system and manufacturing technology.
- Development, sales maintenance, and its technological consulting for ADA's unique advanced CAE system related in designing mechanical system and manufacturing technology.
- FEM (Finite Element Method) Analysis/ Analysis modeling of designing optimization, analysis operation and entrusted calculation for outcome evaluation.
- tionUser Conferences related to application technology of internationally advanced CAE software, planning and implementing instructional seminars and events, and development of technological documents for these events.

【The Second Business】

- tionOperation of the advanced first-class architect's office with computer support. Services including structural planning and execution designing of large space constructions and specialty construction facilities as well as visual landscape simulation services which required in construction base planning.



■ Company Name	Applied Design Analysis Corporation (ADA)
■ Established	December 1st, 1994
■ Capital	JPY 10 million (Authorized Capital JPY 40 million)
■ President	Masaaki Miyake (The first-class architect license registry number : 191014)
■ P/T Engineering Adv.	Prof. Kanagawa Institute of Tech., Docotor of Mech.Engineerinig, Pro. Engineer/Makoto Tanabe
■ Accounting Advisor	Gunji Accaunting Office/Kenzo Ogata
■ Related Group of Societies	Japan Society of Mechanical Engineers Japan Society for Aeronautical and Space Sciences Japan Society for Comutational Engineering and Schience Japan Society of Civil Engineers society of Automotive Engineers of Japan, Inc. Japan Society for Technology of Plasticity Sectional Committee for Sheet Metal Press Forming and Sectional Committee for Forging
■ Main Clients (in random order)	Honda Motor Co., Ltd., Toyota Motor Corporation, toyota Turbine and Systems Inc, Aisin Seiki Co., Ltd., NHK Spring Co., Ltd., Koito Manufacturing Co., Ltd., Press Kogyo Co., Ltd., Mitsubishi Heavy Industries, Ltd.,Kawasaki Heavy Industries, Ltd.,TS Corporation, ShinMaywa Industries, Ltd., EPSON, SII, SONY, Citizen Watch Co., Ltd., Olympus, Casio Computer Co., Ltd., Mitsubishi Electric Corporation,Sumitomo Electric Industries, Ltd., Toshiba,Hoshiden Corporation, NTT, Komatsu, Hitachi Construction Machinery Co., Ltd., Bridgestone, NGK Insulators, Ltd., Oiles Corporation, Mitsubishi Chemical Corporation, Mitsubishi Plastics, Inc., Kanegahuchi Chemical Ind. Co., Ltd., Sekisui Chemical Co., Ltd., Zeon corporation, Nippon Light Metal Co., Ltd., Kobelco Systems Corporation, Fujikura Ltd., Shimizu Corporation, US Boeing,Office of US Naval Research, Kyoto University, Tokyo University, Tohoku University, Hokkaido University, Nagoya University, Kyushu University, Nagasaki University, Tokyo Institute of Technology, Niigata University, Hirosaki University, Toyama University, Kanazawa University, Tokushima University, Institute of Technologists, The University of Kitakyushu, Meiji University, Osaka Institute of Technology, Osaka Sangyo University, Special Engineering College of Kagakuin University, Tokyo Denki University, Takushoku University, Keio University, tokyo Metropolitan Institute for Education of Technology, Nagasaki Prefecture, etc...
■ Address	[Tokyo] 6F Kashiwaya Bldg. 3-40-11 Hongo, Bunkyo-ku, Tokyo 113-0033, Japan TEL(Technical Sales Dept.) : 81-3-3815-6335 TEL(Customer Support) : 81-3-3815-6340 FAX : 81-3-3815-6336 [Nagoya] 1F Taki Bldg, 2-23-16 Meieki, Nakamura-ku, Nagoya-city, Aichi-Ken 450-0002 JAPAN TEL: 81-52-563-8177 [Osaka] 526 Studio Sinnosaka Bldg, 1-17-5, Higashi-Nakashima, Yodogawa-ku Osaka-city, Osaka-Hu 533-0033 JAPAN TEL: 81-6-6300-7405 E_mail : info@ada.co.jp
■ License Affliatoinis	ESRD (Engineering Software Research and Development in the United States) QuanTech, Inc CIMNE (International Center for Numerical Methods in Engineering in Europe) dataM Sheet Metal Solutions GmbH VMTech Co.,Ltd

